



CERAMIC DUPLEXER SAMPLE SPECIFICATION

Part No.: **CMD810C947/902P25A**

Customer:

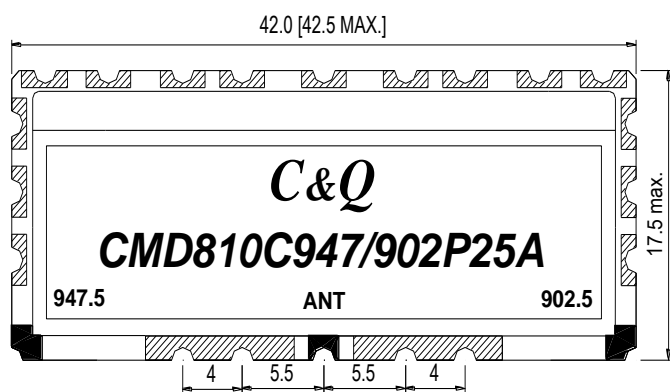
Date: **2007-07-03**

Written by	Checked by	Approval

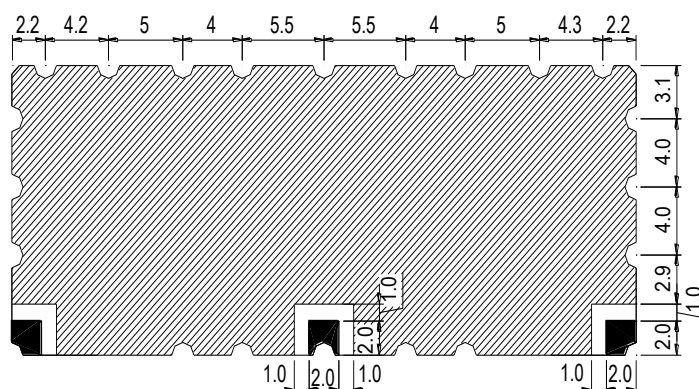
ELECTRICAL SPECIFICATIONS				
ITEM	Low >>> ANT	High <<< ANT	UNIT	
1	Center Frequency [fo]	902.5	947.5 MHz	MHz
2	Bandwidth [BW]	fo ± 12.5 [890~915]	fo ± 12.5 [935~960]	MHz
3	Insertion Loss in BW	2.5 max.	2.5 max.	dB
4	Ripple in BW	1.5 max.	1.5 max.	dB
5	VSWR in BW	1.5 : 1 max.	1.5 : 1 max.	Ratio
6	Input Power	3.0 max.	3.0 max.	W
7	Attenuation [Absolute Value]	55 min. @ 935 ~ 960 MHz	55 min. @ 890 ~ 915 MHz	dB
8	In/Out Impedance	50		Ω
9	Operation Temperature Range	-40 to +85		°C

DIMENSIONS

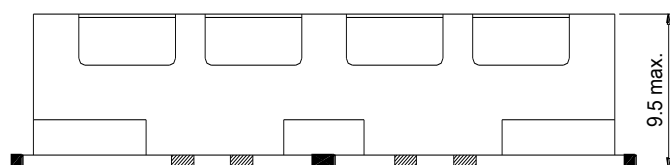
TOP VIEW



BOTTOM VIEW



FRONT VIEW



I/O PORT

GROUND

TOLERANCE : ± 0.20

UNIT : mm

